

(1) EU-Type Examination Certificate

according to Module B Paragraph 6.1 of PPE Regulation (EU) 2016/425

- (2) Regulation of the European Parliament and of the Council of 9 March 2016 relating to personal protective equipment (PPE) - Regulation (EU) 2016/425
- (3) No. of EU-Type Examination Certificate: **ZP/B194/18** replaces ZP/B198/16
- (4) Product: **Guided type fall arrester including a rigid anchor line**
Type: **H-50**
- (5) Manufacturer: **Hailo Werk Rudolf Loh GmbH & Co. KG**
- (6) Address: **Daimlerstraße 8, 35708 Haiger, Germany**
- (7) Risk category: **III**
- (8) The design and construction of this personal protective equipment and any acceptable variation thereto are specified in the appendix to this EU type-examination certificate.
- (9) The certification body of DEKRA EXAM GmbH, Notified Body No. 0158 according to Chapter V of Regulation (EU) 2016/425 of 9 March 2016, certifies that this personal protective equipment has been found to comply with the essential Health and Safety Requirements given in Annex II to the Regulation. The evaluation results are recorded in report PB 18-197.
Other possibly applicable Union legislations applicable to the specified personal protective equipment have not been taken into account in this EU-type examination certificate.
- (10) The essential Health and Safety Requirements are assured in consideration of
DIN EN 353-1:2018
- (11) This EU type-examination certificate relates only to the design, examination and tests of the specified personal protective equipment in accordance to Regulation (EU) 2016/425.
For category III personal protective equipment, this EU type-examination certificate may only be used in conjunction with one of the conformity assessment procedures referred to Article 19 (c).
- (12) When applying the CE Marking according to Article 16 and 17 of Regulation (EU) 2016/425 to the products that conform to the types examined, the client is obliged to add, in accordance with the attached pattern, the identification number of the Notified Body engaged in the conformity assessment according to Module C2 or D.
Furthermore, the manufacturer is obliged to issue an EU declaration of conformity in accordance with Article 15 of Regulation (EU) 2016/425 and to enclose it with the personal protective equipment, or to indicate the Internet address in the manual and in the instructions in Annex II, point 1.4., at which the EU declaration of conformity can be accessed.
- (13) This EU-Type Examination Certificate is valid until 2023-09-13

DEKRA EXAM GmbH
Bochum, 2018-09-14

Signed: Wiegand
Certification body

Signed: Mühlenbruch
Special services unit

We confirm the correctness of the translation from the German original.
In the case of arbitration only the German wording shall be valid and binding.


Certification body


Special services unit

TRANSLATION

- (14) Appendix to
- (15) **EU-Type Examination Certificate**
ZP/B194/18
- (16) 16.1 Subject and type
Guided type fall arrester including a rigid anchor line
Type: H-50

16.2 Description

The guided type fall arrester including a rigid anchor line consists of the guided type fall arresters type: HAILO Partner R1 (fig. 1) and type: SPL-50-R3 (fig. 2) as well as the rigid anchor line in the form of a rail and serves as protection against falls from a height of one person.

The rail can be made of aluminum, stainless steel or galvanized steel (fig. 3). Dependent on the combination of rail and guided type fall arrester the minimum and maximum rated loads and angles of inclination according to table 1 are possible:

Table 1: Minimum and maximum rated loads and angles of inclination

Guided type fall arrester	Rigid anchor line	Inclination (forward/ backward) [°]	Rated load (min./ max) [kg]
Hailo PARTNER R1	Stainless steel	0 / 0	60 / 100
	Aluminum	-3 / 15	50 / 136
	Galvanised steel	0 / 0	60 / 100
SPL-50-R3	Stainless steel	0 / 0	50 / 136
	Aluminum	-3 / 15	50 / 136
	Galvanised steel	0 / 0	60 / 100

The guided type fall arresters are equipped with an energy-dissipating element in the form of an absorber type: BFD 50-136.

One end of the absorber is provided with a curved shackle which is screwed secured with the guided type fall arrester.

The guided type fall arrester type: SPL-50-R3 is removable from the rigid anchor lines only at the appropriate positions. The guided type fall arrester type: Hailo PARTNER R1 is equipped with a mechanism which allows a removal and assembly on every position. One more possibility of removal is given by the rotary extracting device (fig. 7).

The connection of two rail sections is realized by using a joint (fig. 5).

The upper and lower end stop type: end stop H-50 is screwed permanent to the rigid anchor line (fig. 4). Thereby the rigid anchor line is secured against unintended overrun.

The assembly of the rigid anchor line is carried out by means of U-bolts M10 on ladders with sufficient strength. Further components of the system are the entry aids type: entry aid Standard H-50 (fig. 8) and type: entry aid Comfort H-50 (fig. 9) which guarantee a safe access.

The overlap at the upper end of the anchor line is equipped with a reinforcement (fig. 6).

TRANSLATION



Fig. 1: Guided type fall arrester, type: Hailo PARTNER R1

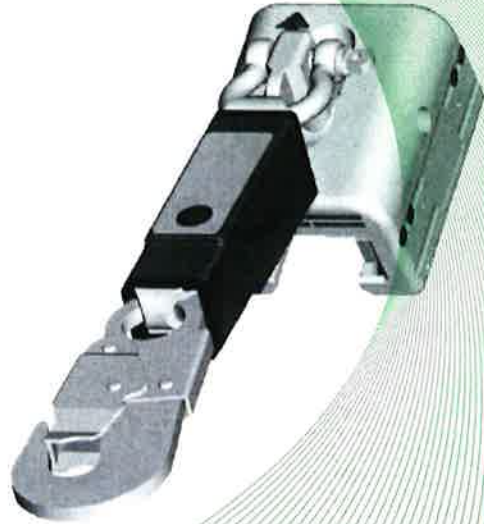


Fig. 2: Guided type fall arrester, type: SPL-50-R3

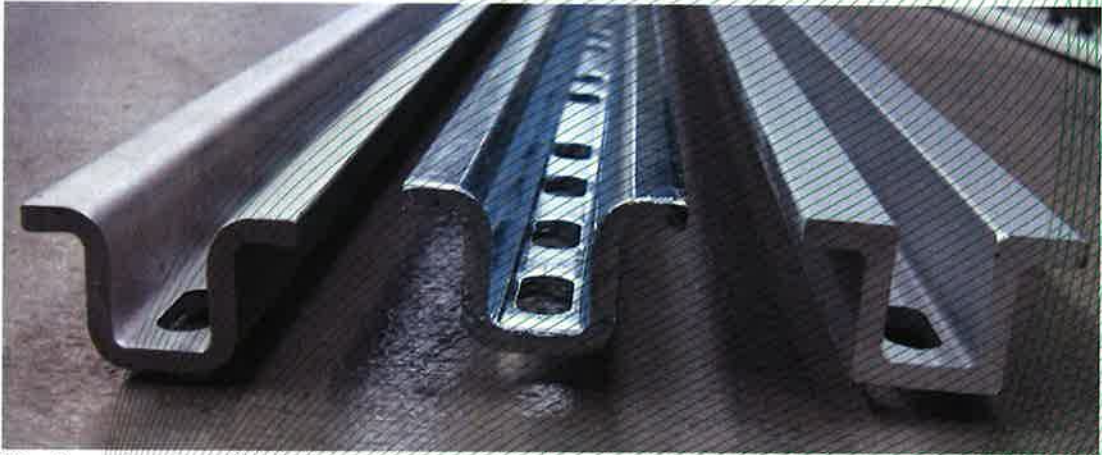


Fig. 3: anchor lines (stainless steel, galvanised steel, aluminum)



Fig. 4: End stop type A und type B, type: end stop H-50



Fig. 5: joint (galvanised steel and stainless steel)

TRANSLATION

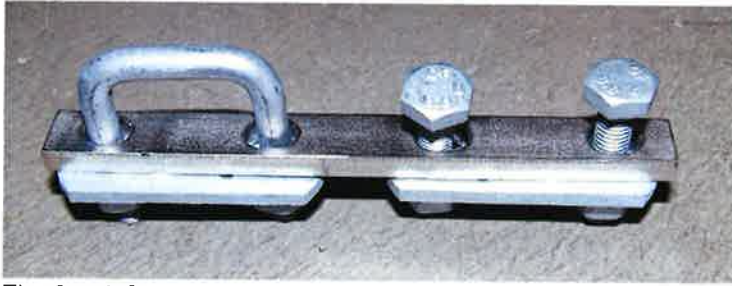


Fig. 6: reinforcement

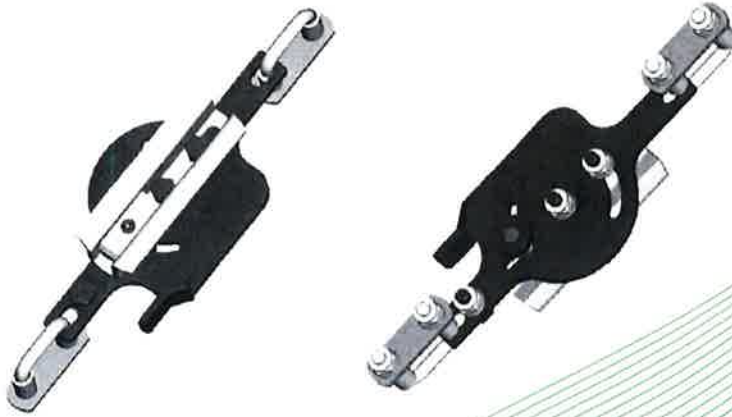


Fig. 7: rotary extracting device

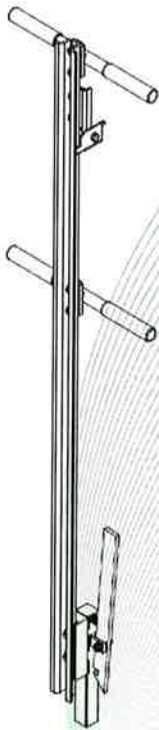


Fig. 8: entry aid type:
entry aid Standard H-50

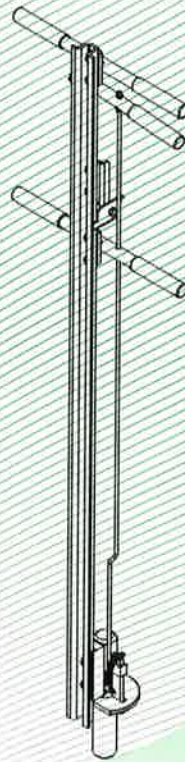


Fig. 9: entry aid type:
entry aid Comfort H-50

(17) Test Report

PB 18-197, 2018-09-14