



HS2 in stainless steel

9511631

GTIN: 4007126047687

Raised central lid with reinforcing beading, concealed hinges, gas strut as an opening aid, self-acting catch and self-opening lock with emergency catch, can be opened from below. The frame consists of an angle profile with all-round frost and weather-resistant, insect-proof seal and internal dowel brackets (fixing material available separately under accessories). Other sizes available on request.

Length x width in mm
600x600

Version
With ventilation and insulation

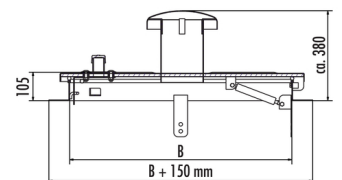
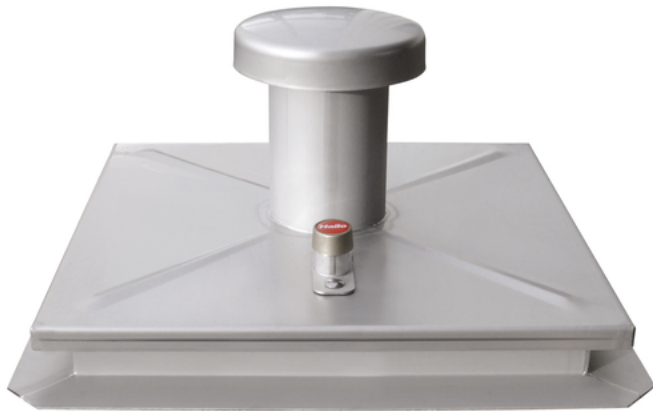
- Rectangular design
- Surface water proof
- Material: Stainless steel 1.4301 / ASTM 304
- Plate thickness 4mm

At additional cost:

- Locking action with profile cylinder
- operator key
- Material: 1.4571/ASTM 316 ti
- Safety grille
- Safety rail

Specifications

| | |
|-----------------|--------------------------------------|
| Material | Stainless steel 1.4301 / AISI 304 |
| Plate thickness | 4 |



PRODUCT SPECIFICATION SHEET



| | |
|--|---------------------------------|
| Thightness | surface water proof |
| raised from ground | ✓ |
| rectangular | ✓ |
| Length x width in mm | 600x600 |
| Version | With ventilation and insulation |
| Number of optional fixing materials (pcs.) | 4 |

