

HS7 in stainless steel 1.4301 /
AISI 304

9557601

GTIN: 4007126047168

The cover is out of 4 mm chequer or raised pattern safety plate with the load class 15 kN (EN 124) The frame has an angle iron with perimeter frost-resistant and weatherproof seal in cover. It's raised from ground with external hinges, gas-pressurised spring, self-aligning positioning mechanism and has an opening assisted by gas-pressurised spring. Other sizes on request.

Length x width in mm
600x600

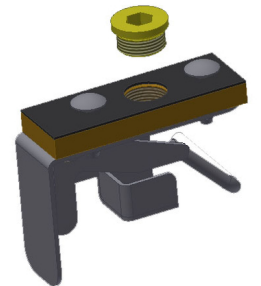
Version

Swivel fastener, prepared for padlock

- rectangular design
- safe to walk on
- surface water proof
- Load class A 15kN
- Material: Stainless steel 1.4301 / ASTM 304

At additional cost:

- Lock for securing / hook key
- Material: 1.4571/ASTM 316 ti
- Safety grille
- Safety rail



Specifications

| | |
|----------|--------------------------------------|
| Material | Stainless steel 1.4301 / AISI 304 |
|----------|--------------------------------------|

PRODUCT SPECIFICATION SHEET



| | |
|----------------------|---------------------------------------|
| Plate thickness | 4 |
| Tightness | surface water proof |
| Load class | A 15kN |
| raised from ground | ✓ |
| rectangular | ✓ |
| accessible | ✓ |
| Length x width in mm | 600x600 |
| Version | Swivel fastener, prepared for padlock |

