



Extension arm type ASS-2 incl.
ground sleeve

9698621

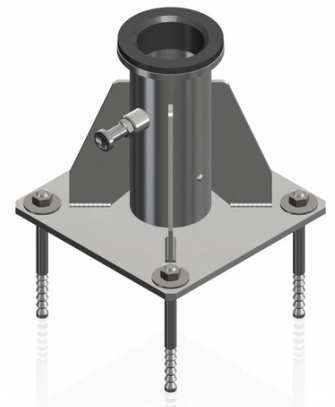
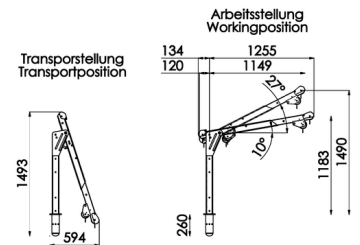
GTIN: 4007126048103

Tested as an anchoring device for PSAgA (personal fall protection equipment) pursuant to DIN EN 795, class B, for mounting on service vehicles. The extension arms were specially-developed for use with the fall protection safety device with rescue lift or winch. A ground sleeve is included in the scope of delivery!

- Material 1.4571 stainless steel
- Removable extension arm
- Facilitates quick location change
- Sturdy construction for stability
- Height adjustable
- Suitable for use with all IKAR fall arresters with lifting equipment (type HRA)
- A ground sleeve is included

Optionally available:

- PLW personnel and load winch, nominal load 300 kg
- IKLW 300 manually operated winch up to max. load 300 kg and with max. cable length 20 m
- HRA devices



Specifications



Typ AASS-2	✓
Material	Stainless steel 1.4571 / AISI 316ti