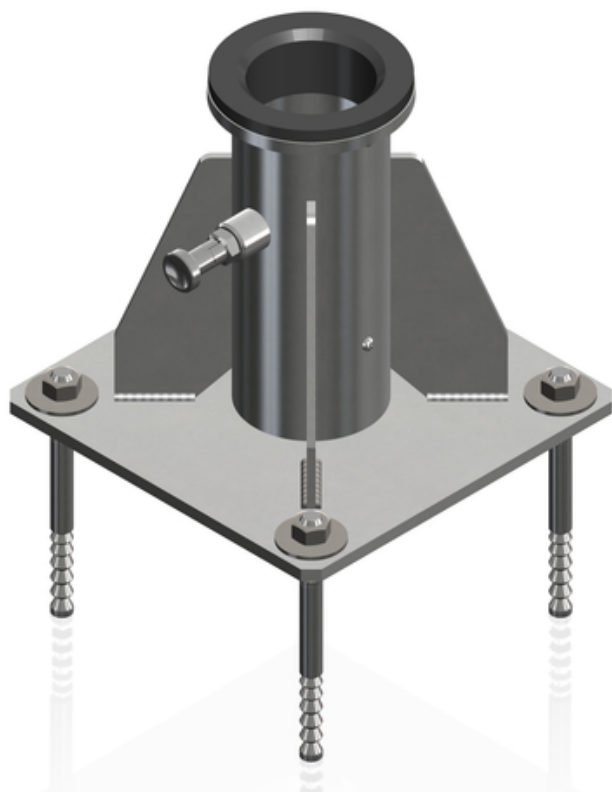


Ground sleeve

9698641

GTIN: 4007126048134

A grounding sleeve for doweling on a solid ground for loading the extension arm.



- Material stainless steel 1.4571 (V4A)
- Pivot bearing made of durable PA (polyamide)
- Locking bolt (V4A) for fixing extension arm position
- Can be installed on existing concrete components by means of recommended injection anchor system type MKT VMZ-AA4 145 M16-30/200 (Item. no. 41-57/9) or steel constructions with M 16 screw fixings grade 8.8
- The existing component must be capable of withstanding the force of a fall. The customer must provide proof of this
- Optionally available: clampable, dustproof and splashproof protective cover (article no.: 1187609) (clamp construction) made of PA (polyamide) can be operated by means of special keys and is compatible with IKAR ground and wall sleeves for extension arms type ASS 1-3

Specifications

For doweling



Material

Stainless steel 1.4571 /



AISI 316ti
