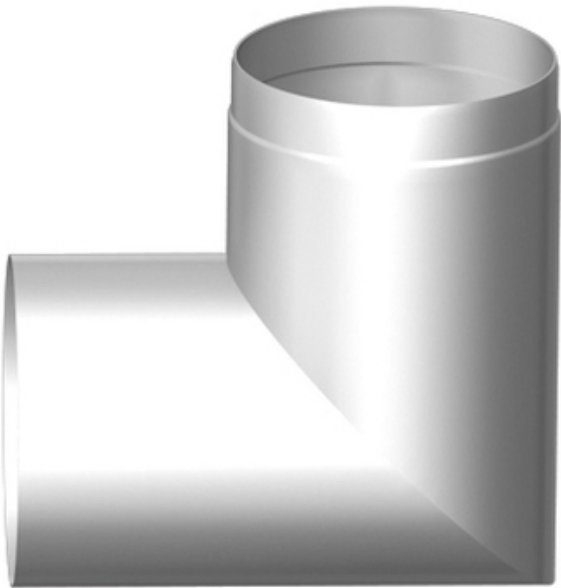




90° angle with plug-in connection



**9533574**

GTIN: 4007126046116

90 ° bends can be used to change the course of the pipe. Like the extensions, they have a plug-in fitting that fits into the previous pipe. For the DN150 system, a pipe arch with condensation drain can be supplied. We recommend using the special adhesive HD 150.150 KTU 593 (0100121) on the plug-in attachment in order to make the connection between two pipes permanently secure and seal it, especially for soil installation.

Version  
DN 100

- Suitable for different diameters of the pipe system
- DN100

Specifications

|          |  |
|----------|--|
| Material | stainless steel 1.4404 /<br>ASTM 316 L |
| Version  | DN 100                                 |