

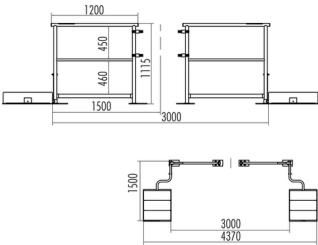
## Safety railing on roof elevations

**6050221**

GTIN: 4007126025968

The main purpose of the safety balustrade is to provide protection from strong winds in order to prevent falls. The balustrade is fixed to the parapet crossing platform.

- Additional protection
  - Attached to Attica crossing
  - Fixing to the pond surface
- 
- Width per rail: 1200mm



### Specifications

Material	hot galvanised steel 1.0037 / ASTM A36
Height in mm	1115
Railing width	1200