



## Crossing unit for square rail 40x20mm

**9691571**

GTIN: 4007126033840

At a height above 10 m, climbing paths have to be carried out more than once. In order to be able to change from one climb to the next, a changeover unit is required at this point. There are the left and right versions. The decision is in which direction I will continue to come from below!

### Material

Stainless steel 1.4301 / AISI 304

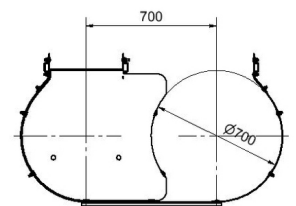
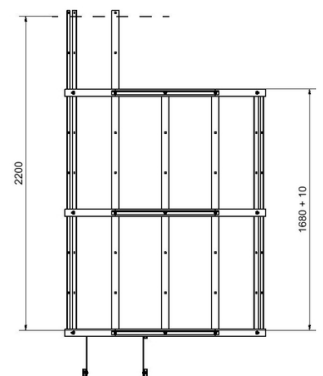
### Version

left

- System components for the highest safety requirements
- High quality
- Tested according to the most stringent standards and safety regulations
- certified according to DIN EN ISO 14122-4 and DIN 18799-1

The full set of crossing unit includes the following parts:

- 1x base plate for crossing unit
- 2x support beam for base plate
- 7x vertical bars for rear safety cage of the crossing unit (4x 1680 & 3x 2520)
- 3x rear safety guard for crossing unit
- 3x stiffening bracket for rear safety guard





Specifications

Material	Stainless steel 1.4301 / AISI 304
Version	left

